

How To Program Baofeng Radio With North Idaho Repeater Map Data

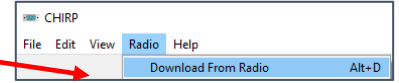
1. Download CHIRP from website https://trac.chirp.danplanet.com/chirp_daily/LATEST/ Ver 1-4, 2024-06-12
nid2m70cm@gmail.com



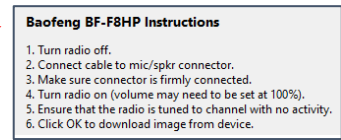
Select [chirp-daily-20240610-installer.exe](#) from green line on webpage. This will auto download a CHIRP .exe program to your computer. Find where it's located on your computer and execute the link. Once the program is installed open it up & begin the steps below. **Note: Date of file will be different than depicted above**

2. Ensure Baofeng Radio is **OFF**, plug-in programming cable to radio and to a USB port on computer.

3. Turn radio **ON** & select Download From Radio, from Radio Tab on CHIRP

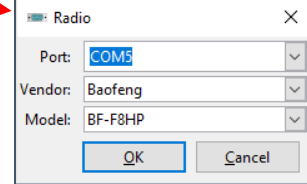


4. This will open a mini window with a Warning, Ensure items 1-6 are completed

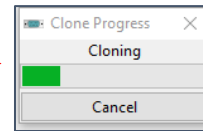


5. This will open another window with 3 dropdown lists
Select a COM port (*if more than one try each until next step works*)
Select Baofeng from Vendor list
Select UV-5R, BF-F8HP, K5 Plus (*or your Baofeng version*) from drop down list
Select the OK Tab

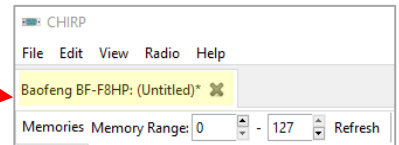
Note: If you can't identify a COM Port, the programming cable probably needs an updated driver. This requires some internet help to fix or purchase of a new cable



6. This will open another mini window with a Cloning scroll bar indicating that the radio is transferring its data to CHIRP program



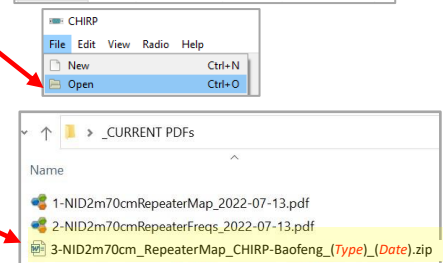
7. When download is complete this tab will appear on CHIRP Software depicting what's currently programmed in your radio



8. Select File, Open

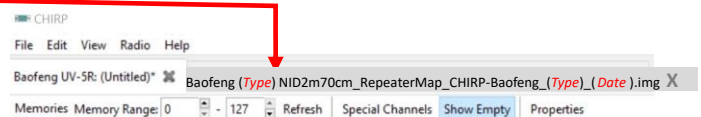
9. Navigate to the NID2m70cm_RepeaterMap_CHIRP-(Type) (Date).img file that was included on the email CHIRP zip attachment (by unzipping the file) included with the Repeater Map Data wherever you stored it on your computer. Open only the .img file for your type of radio (UV5 or K5).

Note: The CHIRP File was sent as a (.zip) file because email servers will not allow (.img) extensions to be sent via email



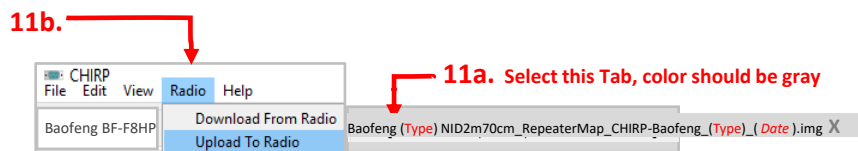
10. The file will automatically open a new tab next to the tab identified in step 7. above indicating that CHIRP program now contains the new data

Note: This will relable the file name by adding your (Baofeng Radio Type) type in front of file name



11. 11a. Highlight this new tab to make sure it's the active tab (shaded gray)

11b. Select Radio, Upload to Radio, then OK



The Cloning scroll bar identified in Step 6 above will reopen the NID2m70cm_RepeaterMap_CHIRP-Baofeng_(Type)_(Date).img as the data is transferred to your radio. Data was transferred correctly to your radio if you see the Year, Month, Day, of Repeater Map **240612** on your radio screen on Channel **127** on **UV5R .img** version and **Channel 131** on **K5 Plus .img** version file. After a successful download, close both **X** tabs down by clicking on the right side of each tab. Then try uploading new Repeater Map data from your radio back into CHIRP so that you can clone it to additional radios using the Download & Upload options identified in steps 3 & 11 above.

CHIRP (Baofeng_K5-Plus_20240624.img)

File Edit View Radio Help

Baofeng_K5-Plus_20240624.img*

Memories Settings

Basic Settings
Work Mode Settings
DTMF Encode Settings

Recommended Basic Settings

Squelch	4
Timeout Timer	120 sec
Dual Watch	<input type="checkbox"/>
Power On Display Type	BATT voltage
Voice Prompt	English
Enable Voice	<input checked="" type="checkbox"/>
Backlight Timer	Always On
Key Auto Lock	<input type="checkbox"/>
Beep	Both
Roger	<input type="checkbox"/>
Channel A display type	Name
Channel B display type	Channel Number
Save Mode	1:4
Timeout Timer Alarm	10 sec
Side Tone	Off
Tail Clear	<input checked="" type="checkbox"/>
Scan Mode	Time
Alarm Mode	Local
Sound Alarm	<input type="checkbox"/>
Key Lock	<input type="checkbox"/>
Menu Quit Timer	60 sec
QT Save Mode	Both
Channel A work mode	Channel
Channel B work mode	Channel
Rpt Tail Clear	0 ms
Rpt Tail Delay	0 ms
Enable Menu Rst	<input checked="" type="checkbox"/>
Vox Level	Off
Vox Delay Time	1000 ms
Disable FM radio	<input type="checkbox"/>

File Edit View Radio Help

Baofeng_K5-Plus_20240624.img*

Memories Settings

Basic Settings
Work Mode Settings
VFO A
VFO B
DTMF Encode Settings

Recommended DTMF Settings

Signal Code 1	
Signal Code 2	
Signal Code 3	
Signal Code 4	
Signal Code 5	
Signal Code 6	
Signal Code 7	
Signal Code 8	
Signal Code 9	
Signal Code 10	
Signal Code 11	
Signal Code 12	
Signal Code 13	
Signal Code 14	
Signal Code 15	
ANI Code	
DTMF Speed (on)	50 ms
DTMF Speed (off)	50 ms
When to send ANI ID	Off
Hang-up time	3 s

File Edit View Radio Help

Baofeng_K5-Plus_20240624.img*

Memories Settings

Basic Settings
Work Mode Settings
VFO A
VFO B
DTMF Encode Settings

Recommended Work Mode Settings

Frequency	149.700000
Shift	Off
Offset (0.0-999.999)	0.000000
Power	High
Bandwidth	Wide
Signal Code	1
Tuning Step	10.0