

# How To Program Baofeng Radio With North Idaho Repeater Map Data

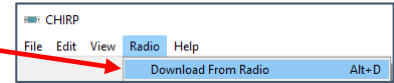
- Download CHIRP from website [https://trac.chirp.danplanet.com/chirp\\_daily/LATEST/](https://trac.chirp.danplanet.com/chirp_daily/LATEST/) Ver 1-2, 2022-07-13  
nid2m70cm@gmail.com



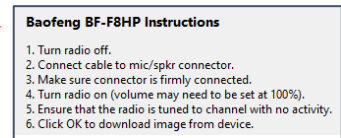
Select [chirp-daily-20220219-installer.exe](#) from green line on webpage. This will auto download a CHIRP .exe program to your computer. Find where it's located on your computer and execute the link. Once the program is installed open it up & begin the steps below. **Note:** Date of file will be different than depicted above

- Ensure Baofeng Radio is **OFF**, plug-in programming cable to radio and to a USB port on computer.

- Turn **ON** radio and select Radio, Download From Radio, Tab on CHIRP

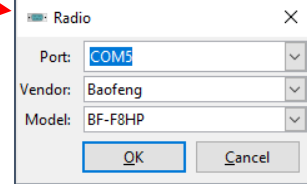


- This will open a mini window with a Warning, Ensure items 1-6 are completed

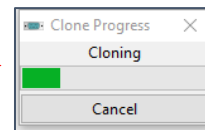


- This will open another window with 3 dropdown lists  
Select a COM port (if more than one try each until next step works)  
Select Baofeng from Vendor list  
Select BF-F8HP, or UV-5R, (Start with BF-F8HP if it doesn't work, try UV-5R)  
Select the OK Tab

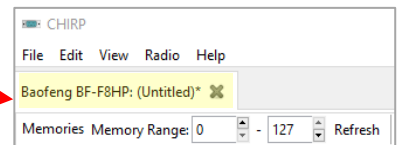
**Note:** If you can't identify a COM Port, the programming cable probably needs an updated driver. This requires some internet help to fix or purchase of a new cable



- This will open another mini window with a Cloning scroll bar indicating that the radio is transferring its data to CHIRP program



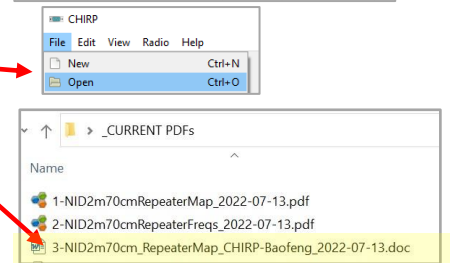
- When download is complete this tab will appear on CHIRP Software depicting what's currently programmed in your radio



- Select File, Open

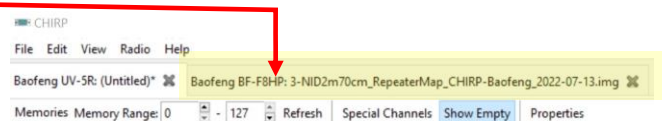
- Navigate to the NID2m70cm\_RepeaterMap\_CHIRP-Baofeng\_2207-13.doc file that was included on the email attachment with the Repeater Map Data wherever you stored it on your computer. Change the file extension from (.doc) to (.img) then open the file

**Note:** The CHIRP File was sent as a (.doc) file because email servers will not allow (.img) extensions to be sent via email



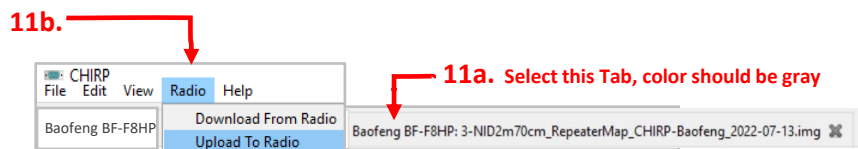
- The file will automatically open a new tab next to the tab identified in step 7. above indicating that CHIRP program now contains the new data

**Note:** This will relate the file name by adding your (Baofeng BF-F8HP) Radio type in front of file name



- 11a. Highlight this new tab to make sure it's the active tab (shaded gray)

11b. Select Radio, Upload to Radio, then OK



The Cloning scroll bar identified in Step 6 above will reopen the NID2m70cm\_RepeaterMap\_CHIRP-Baofeng\_2207-13.img as the data is transferred to your radio. Data was transferred correctly to your radio if you see the following message **N-IDAHO 220713** on your radio screen for 1 second after you first turn radio on. After a successful download, close both tabs down by clicking on the **X** right side of each tab. Then try uploading new Repeater Map data from your radio back into CHIRP so that you can clone it to additional radios using the Download & Upload options identified in steps 3 & 11 above.