



Bonner County Amateur Radio Club

November 9, 2022

VFW Post

1325 Pine Street, Sandpoint, ID 83864

18:00 hrs. – Informal Discussions & Eyeball QSO's

18:30 hrs. - Meeting

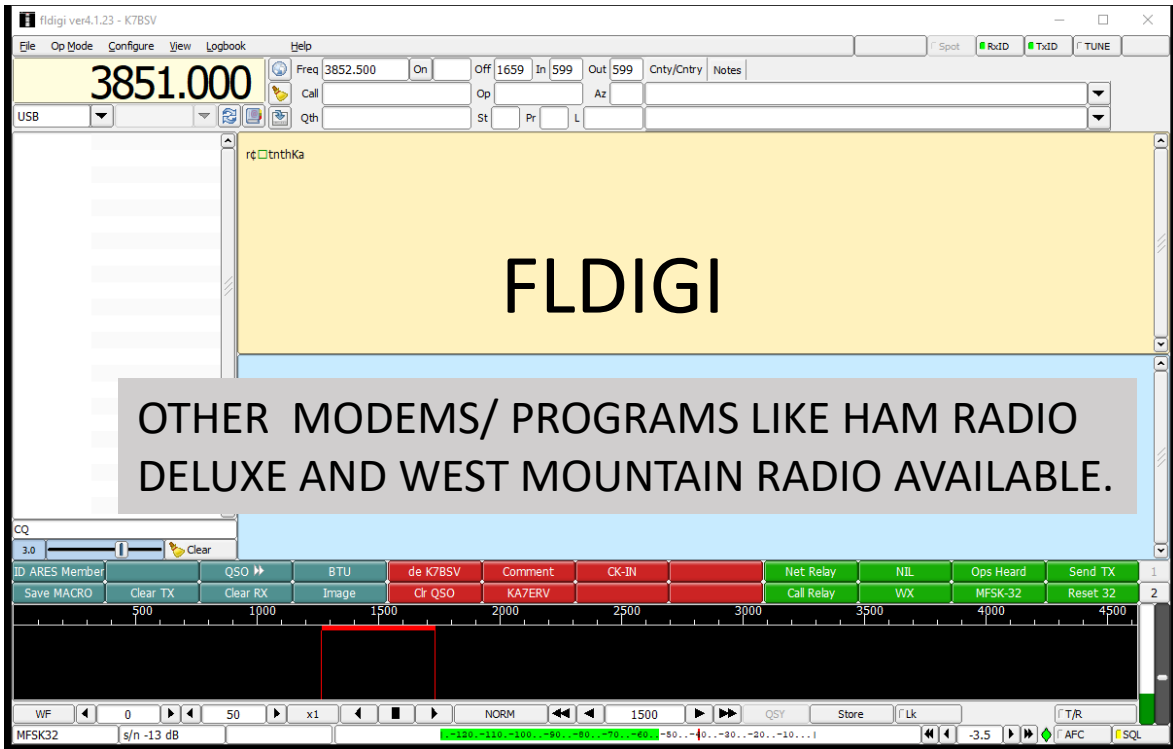
Why Are We Here? Per the Bylaws BCARC

- 1. Facilitate communication and fellowship among amateur radio operators*
- 2. Increase the number of licensed amateur radio operators through training and community awareness and promote active use of the hobby, and provide assistance to new operators to help them get on the air*

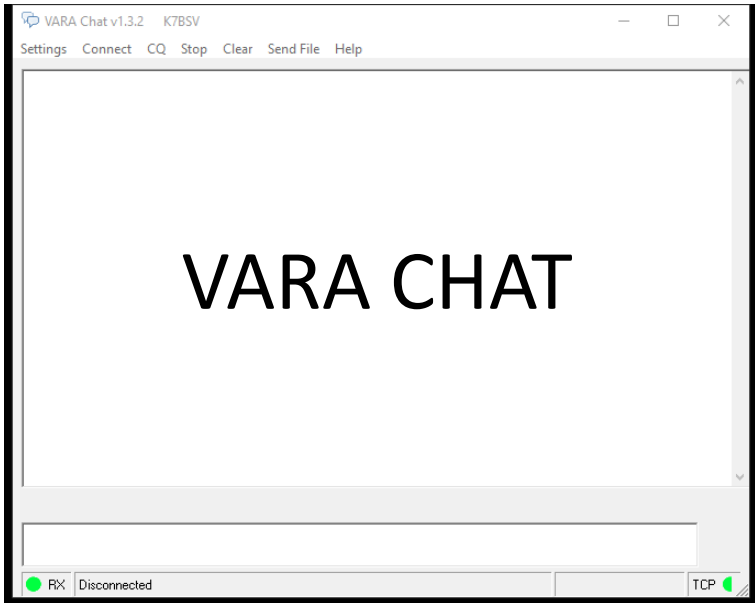
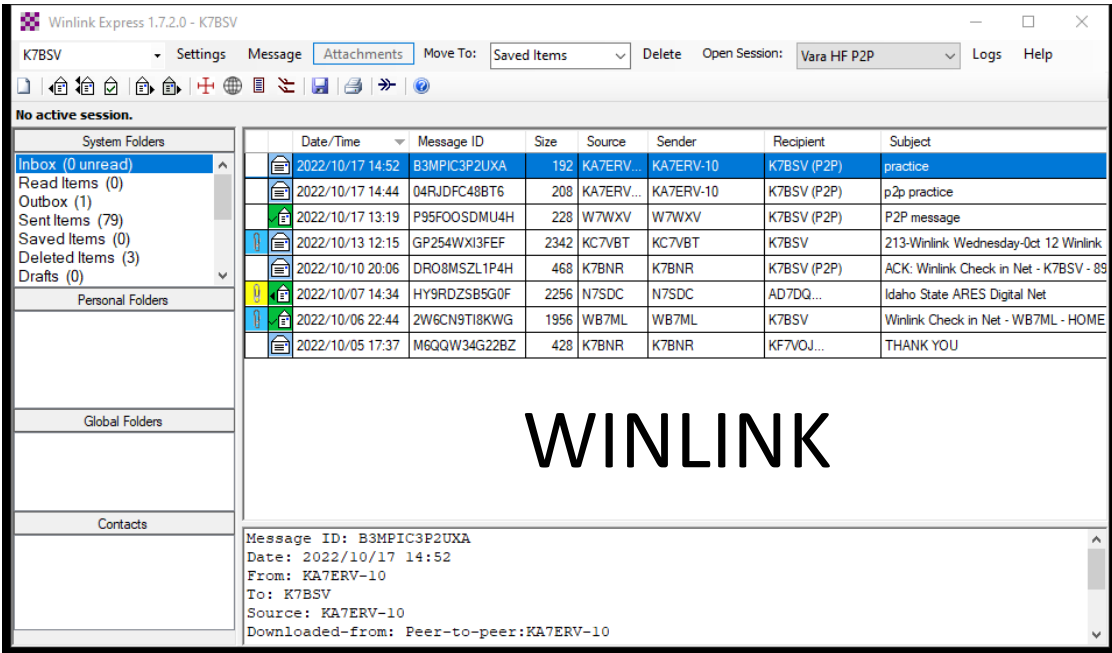
Introductions - Guests, New Members, Members

Current Membership 4th Quarter 2022

Total	44
Extra	11
General	20
Technician	12
No callsign – studying!	1



DIGITAL MODES for CONVERSATION & MESSAGING



WINLINK

VARA CHAT

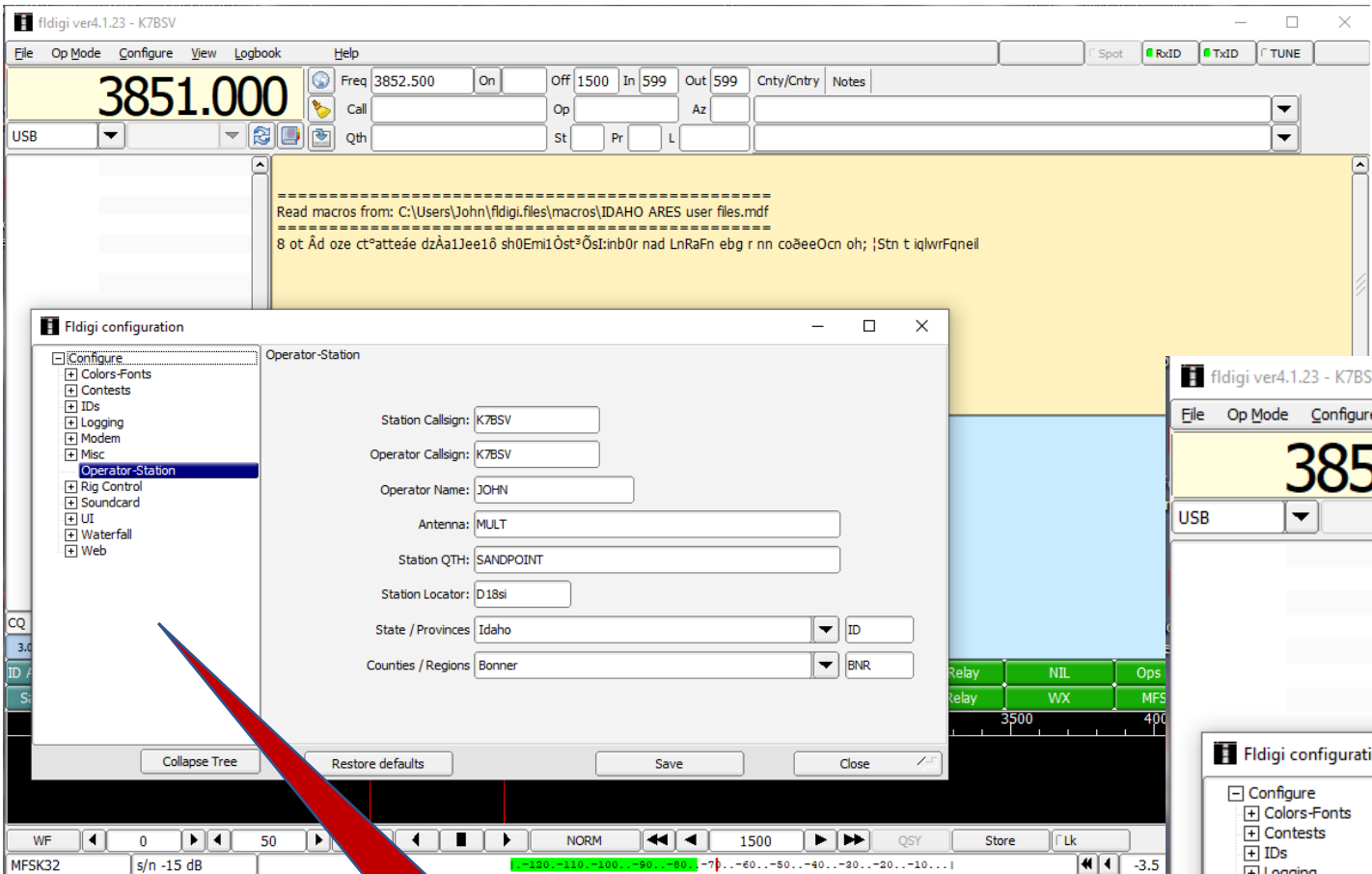
RADIO SETUP

- RADIO SETTINGS – UNIQUE TO EACH RADIO
- NEED A SOUND CARD LIKE A SIGNALINK OR WEST MTN RADIO UNIT TO CONNECT BETWEEN THE RADIO AND COMPUTER USB PORT.
- SOME RADIOS (**IC7200, 7300 AND OTHERS**) HAVE A BUILT IN SOUND CARD AND JUST NEED THE USB CABLE
- NEED MODEM SOFTWARE LIKE FLDIGI, HAM RADIO DELUXE, WINLINK, VARA, ETC.



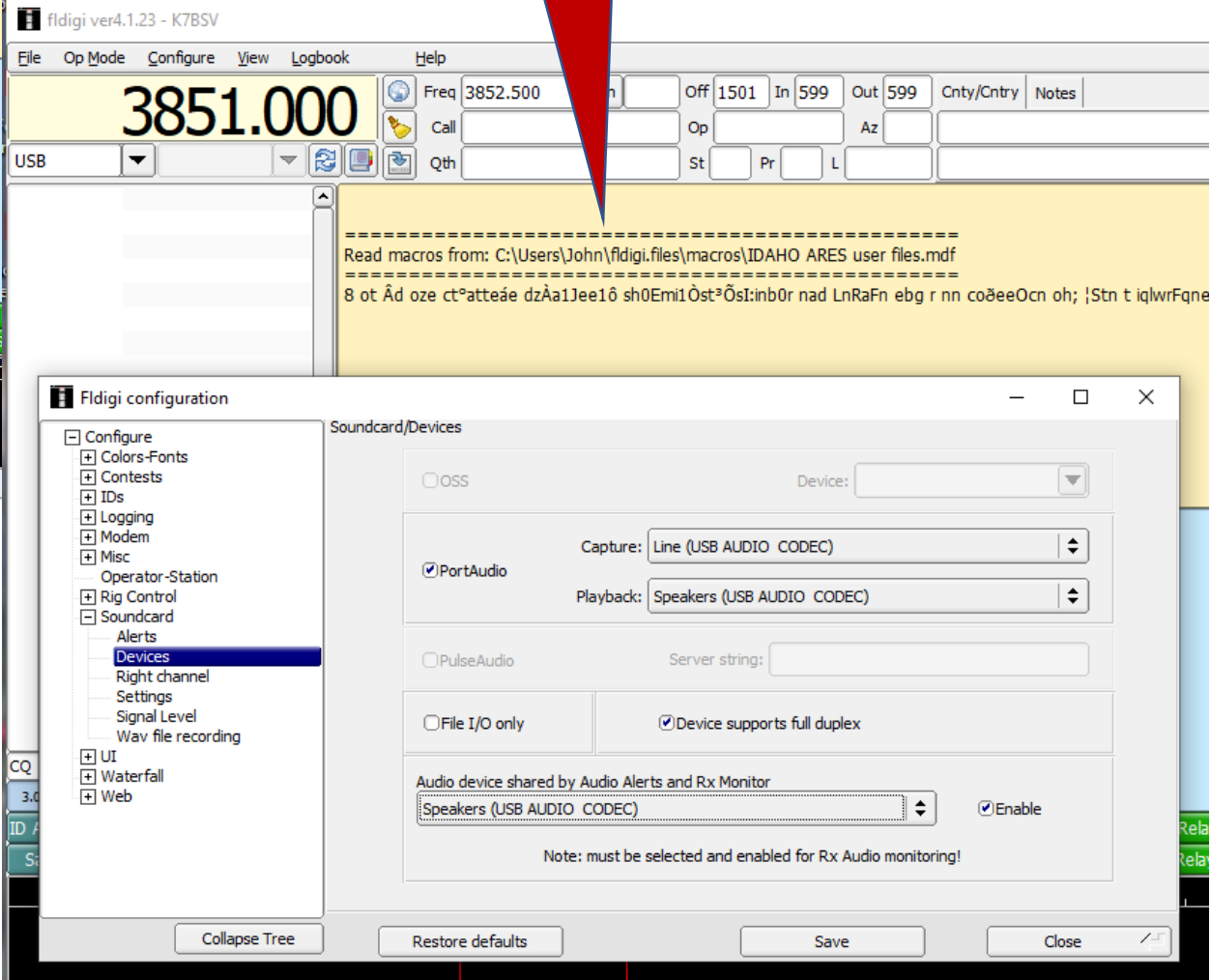
FLDIGI

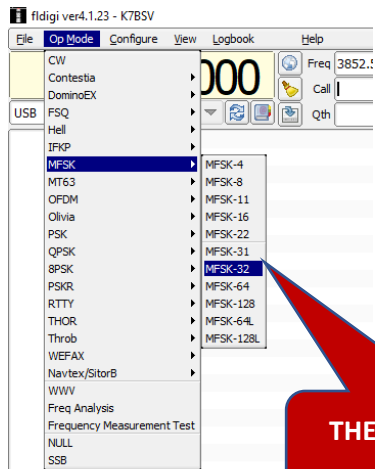
- FREE LIGHT DIGITAL MODEM.
- FREE DOWNLOAD. USED BY MANY HAMS.
- MANY DIGITAL MODES TO CHOOSE FROM (MFSK, FSK, OLIVIA, ETC.).
- ALSO HAS FLMSG (FOR MESSAGE FORMS), FLAMP, FLNET, FLARQ, FLRIG FOR OTHER FUNCTIONALITY – ALL FREE DOWNLOADS.
- USED COMMONLY FOR DIGITAL NETS.
- CAN BE USED WITH ARQ TO PRIMARILY COMMUNICATE WITH ONLY ONE STATION – NOT REAL FAST IN THAT MODE.
- FLAMP IN COMPRESSION MODE WORKS PRETTY WELL STATION TO STATION AND HAS GOOD ERROR CHECKING.



WINLINK SET UP MENU

YOU NEED TO ENSURE THAT AUDIO CODEC IS PROPERLY SET UP ON YOUR COMPUTER; ALSO SOME FORM OF RIG CONTROL IS USEFUL

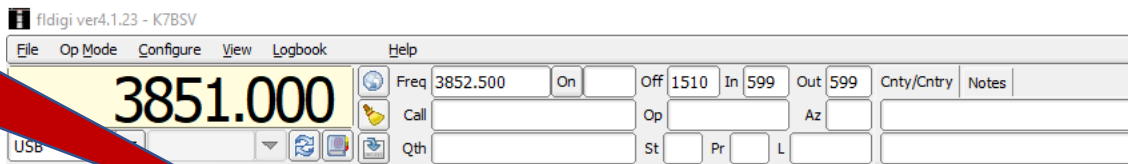
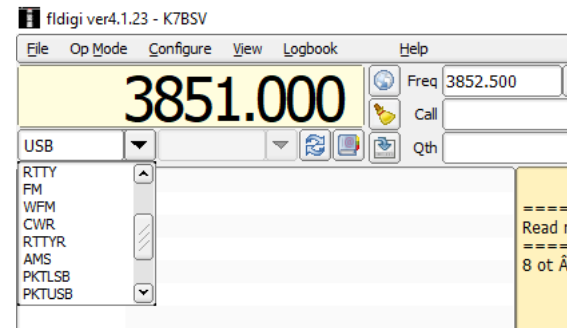




THE OPERATION MODE PULLDOWN

RADIO CONTROL SETTING INFO

MACRO FILES YOU CAN DOWNLOAD OR COPY AND SAVE ARE LOCATED UNDER C: USERS> USERFILE>FLDIGI FILES>MACROS



SETTING UP AND USING FLDIGI TAKES SOME EFFORT, BUT THERE IS HELP AVAIL AS WELL AS LOT OF INFO ON THE INTERNET ON HOWTO SET IT UP.

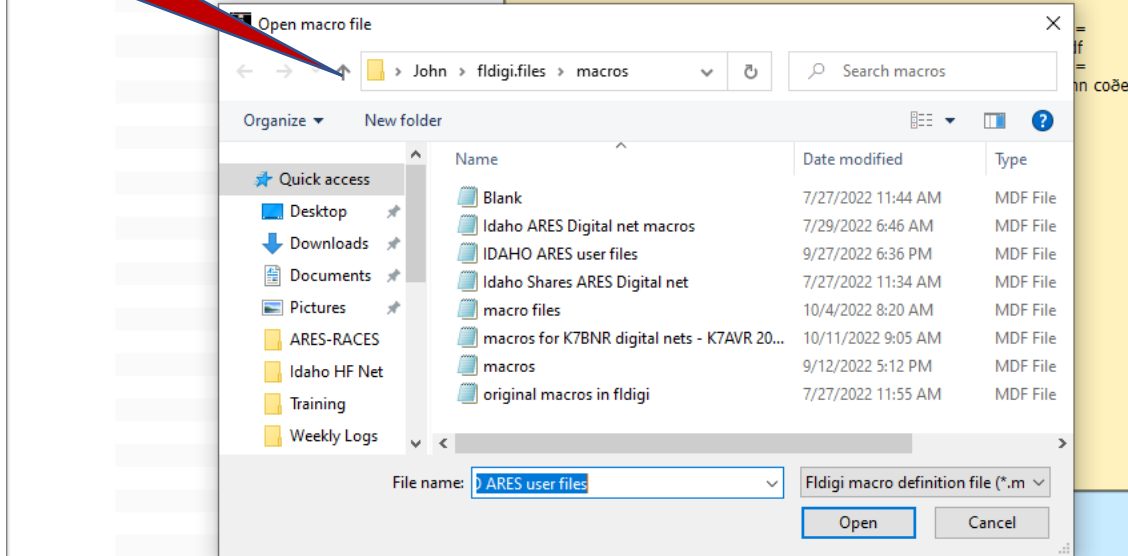
The best way to really get it working is to have a group Zoom or MS Teams session where you can get immediate answers and practice real time.

The KA7ERV GROUP meets every M-W-F at 0600 to practice and assist in learning FLDIGI and Winlink:

<https://us02web.zoom.us/j/9337452882?pwd=VGE5dHpZVmM0QlJDCnVwVU91RTZhdz09>

Meeting ID: 933 745 2882

Passcode: vzV9KE



File Op Mode Configure View Logbook Help

3851.000

Freq 3852.500 On Off 1520 In 599 Out 599 Cnty/Cntry Notes

Call Op 8 Az

USB Qth St Pr L

THE TX (TRANSMIT) WINDOW (LT BLUE) IS WHERE YOU CAN SIMPLY TYPE A RESPONSE TO A CALL OR INITIATE A CONVERSATION.

IN DIGITAL MODES YOU USE "Q" CODES AND MORSE CODE PROWORDS/ "SHORTHAND", E.G. (DE, BTN, BTU, K, QST, QRU, ETC. IN YOUR XMSNS.

GOOD EVENING, WELCOME TO THE BCARC DIGITAL DISCUSSION. THERE ARE OPTIONS TO TRANSMIT IN FLDIGI.

THIS PORTION OF THE SCREEN IS USED TO TYPE OR ENTER (VIA MACRO) THE NEXT TRANSMISSION YOU WISH TO MAKE.

YOU CAN SET UP MACROS TO CALL UP OTHER MACROS OR TO CALL UP TEXT FROM A NOTE FILE YOU CAN PLACE ON YOUR DESKTOP FOR CONVENIENCE.

WHEN YOU HIT THE TRANSMIT BUTTON OR A TRANSMIT MACRO, THIS INFO WILL BE TRANSMITTED AND WILL POPULATE THE YELLOW AREA OF THE FLDIGI SCREEN ABOVE.

File Op Mode Configure View Logbook Help

3851.000

Freq 3852.500 On Off 1514 In 599 Out 599 Cnty/Cntry Notes

Call Op 8 Az

SB Qth St Pr L

```

=====
Read macros from: C:\Users\John\fldigi.files\macros\IDAHO ARES user files.mdf
=====
8 ot Ad oze ct^attee dzAa1Jee1d sh0Emi10st^0st:inb0r nad LnRaFn ebg r nn coðeeOcn oh; !Stn t iqlwrFqneil fsg r6seN
Loaded Macro File: Macro Files<<2022-10-18T15:11Z MFSK-32 @ 3851000+1500>>

Idaho ARES Net Macros<<2022-10-18T15:11Z MFSK-32 @ 3851000+1500>>

```

Macro editor - Idaho ARES Digital net macros.mdf

Macro Text

```

<TXRSID:on>
<RXRSID:on>
<GOFREQ:1500>

QST, QST, QST
This is <MYCALL> tonights net control for the Idaho State HF Digital net. This net meets every Tuesday at 1930 (0130Z) mountain time
on 3.578.5, usb, mfsk-32, @ 1500wf.
This net is conducted at the direction of the ARES Section Emergency Coordinator, and the Idaho RACES Chief Radio Officer.

The purpose of the net is to provide emergency communications training and information, and to test the communications capability of our
ARES and RACES stations in Idaho.

All licensed Amateur Radio operators interested in training in emergency communications skills, and
desiring to contribute to ARES or RACES activities are invited to check-in to the net.

Relays are appreciated when requested by net control.
You can also check in by e-mail to ka7erv@gmail.com.

If there are any stations with traffic or an emergency please call now.

de <MYCALL>
<TX><RX>

```

Select Tag

<FREQ>	my frequency
<MODE>	mode
<MYCALL>	my call
<MYLOC>	my locator
<MYNAME>	my name
<MYQTH>	my QTH
<MYRST>	my RST
<MYCLASS>	my FD class
<MYSECTION>	my FD section
<MYSTATE>	my state
<MYST>	my ST
<MYCOUNTY>	my county
<MYCNTY>	my CNTY
<ANTENNA>	my antenna
<BAND>	operating band
<VER>	Fldigi version
<DIGI>	digital mode (adif)
<CALL>	other call
<NAME>	other name
<QTH>	other QTH
<ST>	other State
<PR>	other Province
<LOC>	other locator
<RST>	other RST
<INFO1>	S/N etc.
<INFO2>	IMD etc.
<QSONBR>	# QSO recs
<NXTNBR>	next QSO rec #
<MAPIT>	map on google
<MAPIT:adr/lat/loc>	map by value
<CLRRX>	clear RX pane
<CLRTX>	clear TX pane
<CLROSO>	clear OSO fields

Macro Button Label NET START

Apply Close

THE NET START MACRO TRANSMITS THIS INFORMATION

FLDIGI MACROS MAKE IT EASY TO QUICKLY TRANSMIT COMPLEX STATEMENTS OR TO RESPOND DURING A NET OR WHEN RUNNING A NET.

3.0

Clear

Id ARES NCS	5 MIN CALL	NET START	Announce	Start Ck-in's	District 1	District 2	District 3	District 4	District 5
Save Macro	Cr RX	Cr TX	NET CLOSE	DE NCS	Relay D-1	Relay D-2	Relay D-3	Relay D-4	Relay D-5

500 1000 1500 2000 2500 3000 3500 4000 4500 5000 5500 6000

3851.000

Freq 3852.500 On Off 1542 In 599 Out 599 Cnty/Cntry Notes

Call Op 8 Az

Qth St Pr L

USB

Macro Files <<2022-10-18T15:40Z MFSK-32 @ 3851000+1500>>

FLDIGI MACROS MAKE IT EASY TO QUICKLY TRANSMIT COMPLEX STATEMENTS OR TO RESPOND DURING A NET OR WHEN RUNNING A NET.

K7BNR de K7BSV
AVAILABLE, NO TRAFFIC
K7BSVBACK TO NET
<TXRID:off> ^j

THE 7B ARES CHECK-IN MACRO TRANSMITS THIS INFORMATION

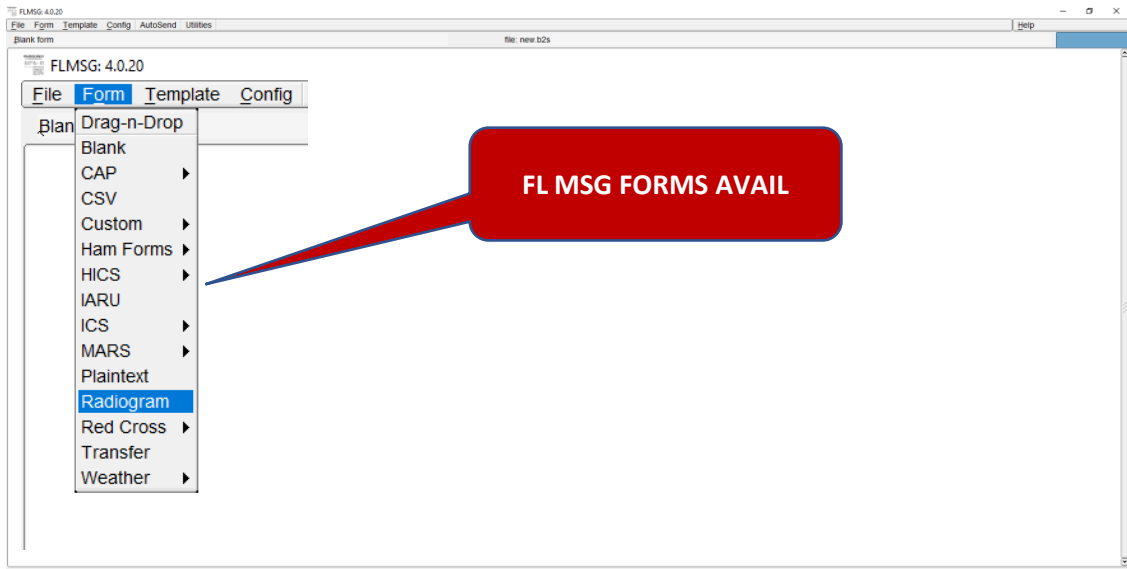
7B ARES CHECK-IN MACRO BUTTON

CQ

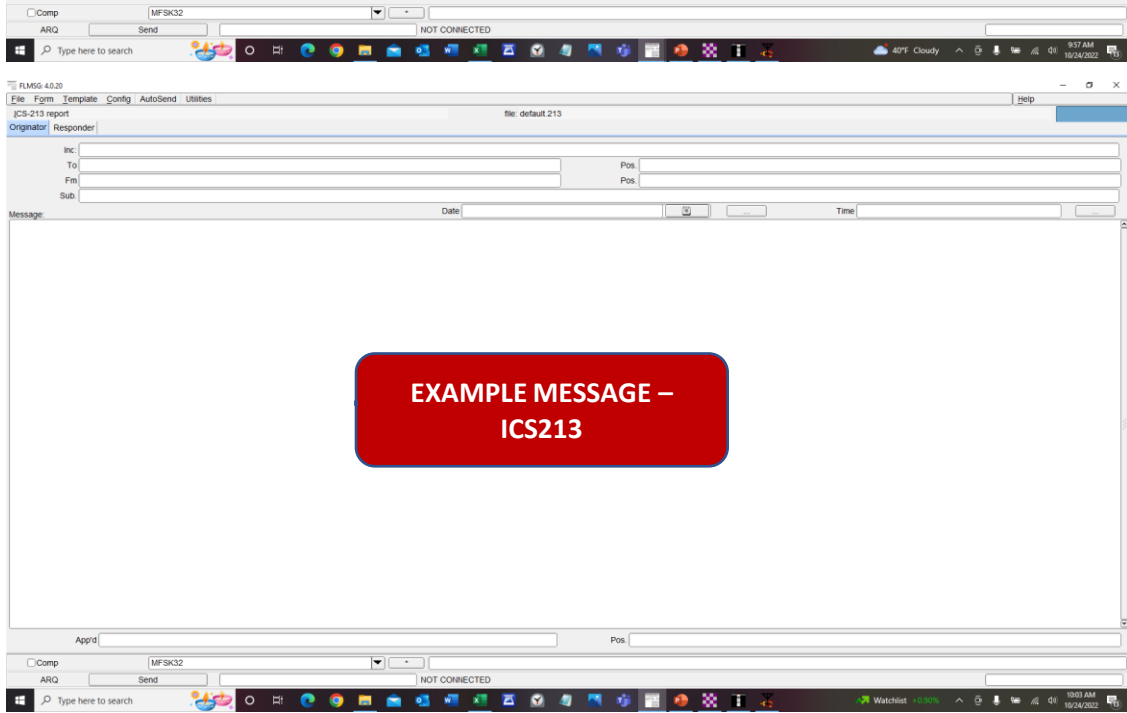
3.0 Clear

MACROS	Blank	ID ARES NCS	ID ARES USER	D1 MFSK32	7B NCS	ORIGINAL
Save Macro	CLR TX	Me/ QTH	7B ARES CK-IN	SEND NOTES	WX REPORT	

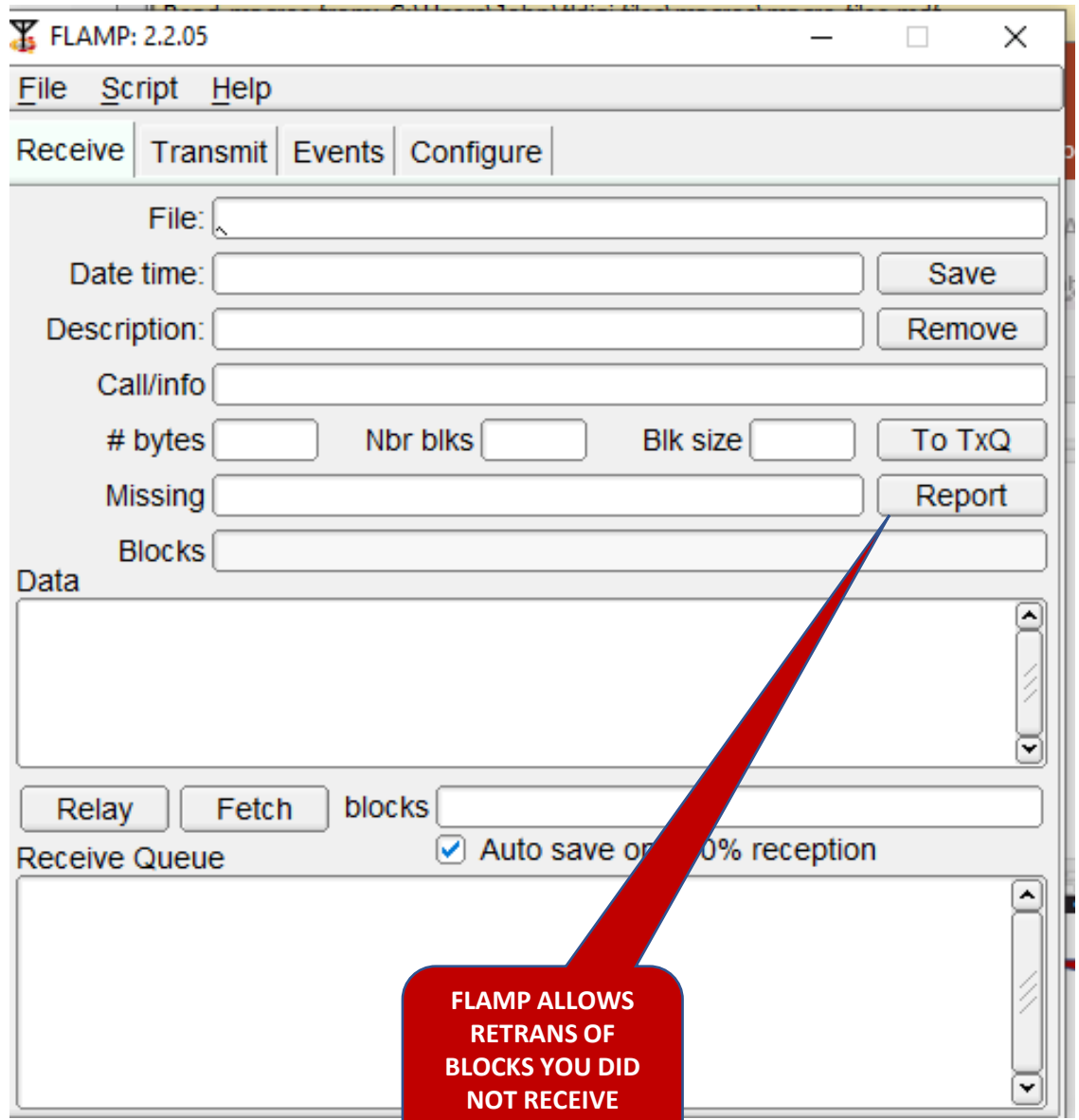
500 1000 1500 2000 2500 3000 3500 4000 4500 5000 5500



FL MSG FORMS AVAIL



**EXAMPLE MESSAGE –
ICS213**



**FLAMP ALLOWS
RETRANS OF
BLOCKS YOU DID
NOT RECEIVE
CORRECTLY**

WINLINK

- WINLINK - FREE DOWNLOAD
- WORKS INTERNET ONLY, RADIO TO INTERNET GATEWAY OR IN VARIOUS RADIO ONLY MODES.
- WORKS WITH PACKET, ARDOP, PACTOR, VARA.
- WINLINK WEB SITE HAS TOOLS AND MAPS SHOWING LOCATIONS OF VARIOUS GATEWAYS WORLDWIDE.
- **NOTE: ALL MESSAGES SENT OVER THE RADIO VIA WINLINK ARE LOGGED ON THE WINLINK WEBSITE. THOSE MESSAGES ARE FULLY ACCESSIBLE TO ANYONE WITH A WINLINK ACCOUNT.**
- WINLINK VARA:
 - VARA BECOMING QUITE POPULAR. VERY FAST AND WORKS WELL WITH TOUGH BAND CONDITIONS.
 - BASIC VARA RUNS AT 10% OF THE MAXIMUM SPEED. TO GET FULL SPEED CONNECTIONS, A ONE TIME \$69 PAYMENT FOR A REGISTRATION KEY IS REQUIRED.*
- PACKET (AX.25): STILL IN USE, BUT IS SLOWLY PHASING OUT – OLDER TECHNOLOGY
- ARDOP: REQUIRES ADDITIONAL SET UP – HAVEN'T TRIED IT YET.
 - LINK: [WinLink HF Ardop – An Illustrated Guide \(ae8q.com\)](http://ae8q.com)
- PACTOR REQUIRES AN EXPENSIVE MODEM TO USE.



- > My Account
- > Tools
- > News
- > Positions
- > User Programs
- > Book of Knowledge
- > Download
- > Support

Winlink Accounts...

...are created with a client program. *You can not create one here.*

We require

- A valid amateur radio license, or
- a license from a participating government service or agency. *Ship station, marine or general radiotelephone licenses DO NOT qualify.*

How To Get an Account

- Download, install and configure any [client software](#). We suggest [Winlink Express](#). Study its help about installation and use.
- **If using Winlink Express**, with an internet connection fill out the form presented on first startup after installation. See the help article "Basic Configuration" for guidance. Be sure to include a password and password recovery address. Click 'Update'. Winlink Express makes the process easy. Your account is created!

If you use a different program than Winlink Express:

- Follow the program's help or instructions to configure it for your callsign and use. Connect with the system (sending a

My Account

Username (Callsign) *

Enter your Winlink Global Radio Email username.

Password *

Enter the password that accompanies your username.

Log in

Password Assignments & Recovery

Forgot your Winlink password?

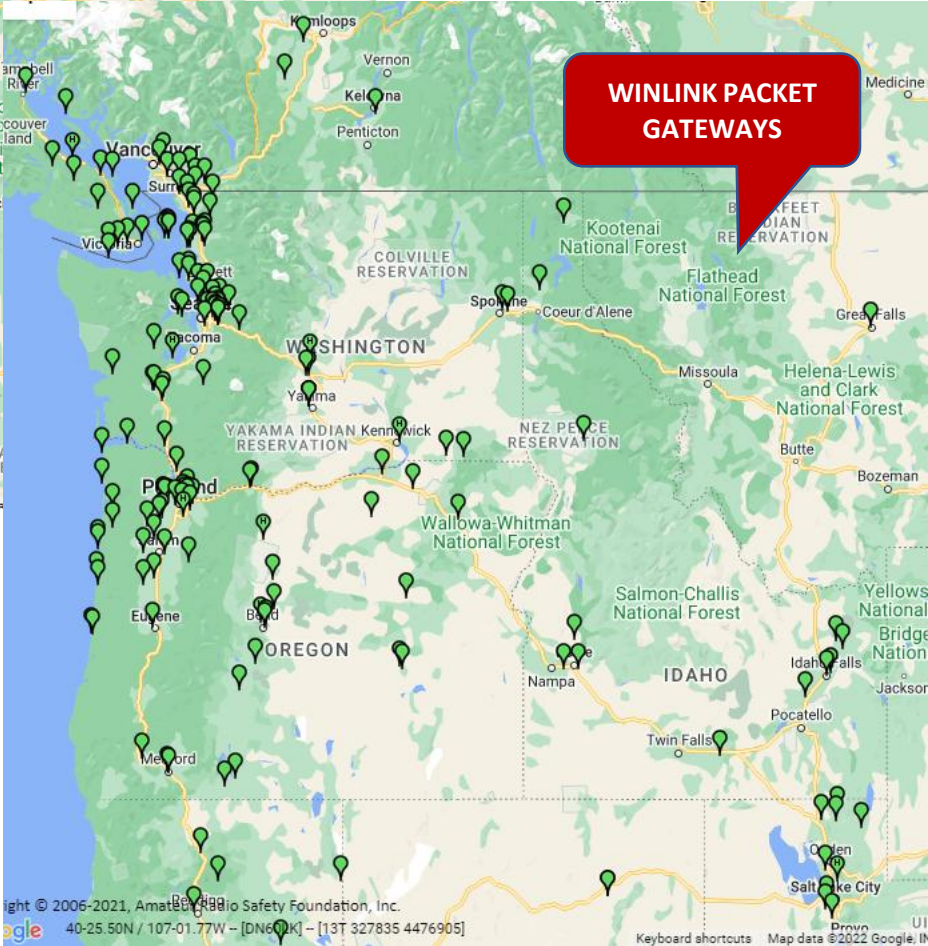
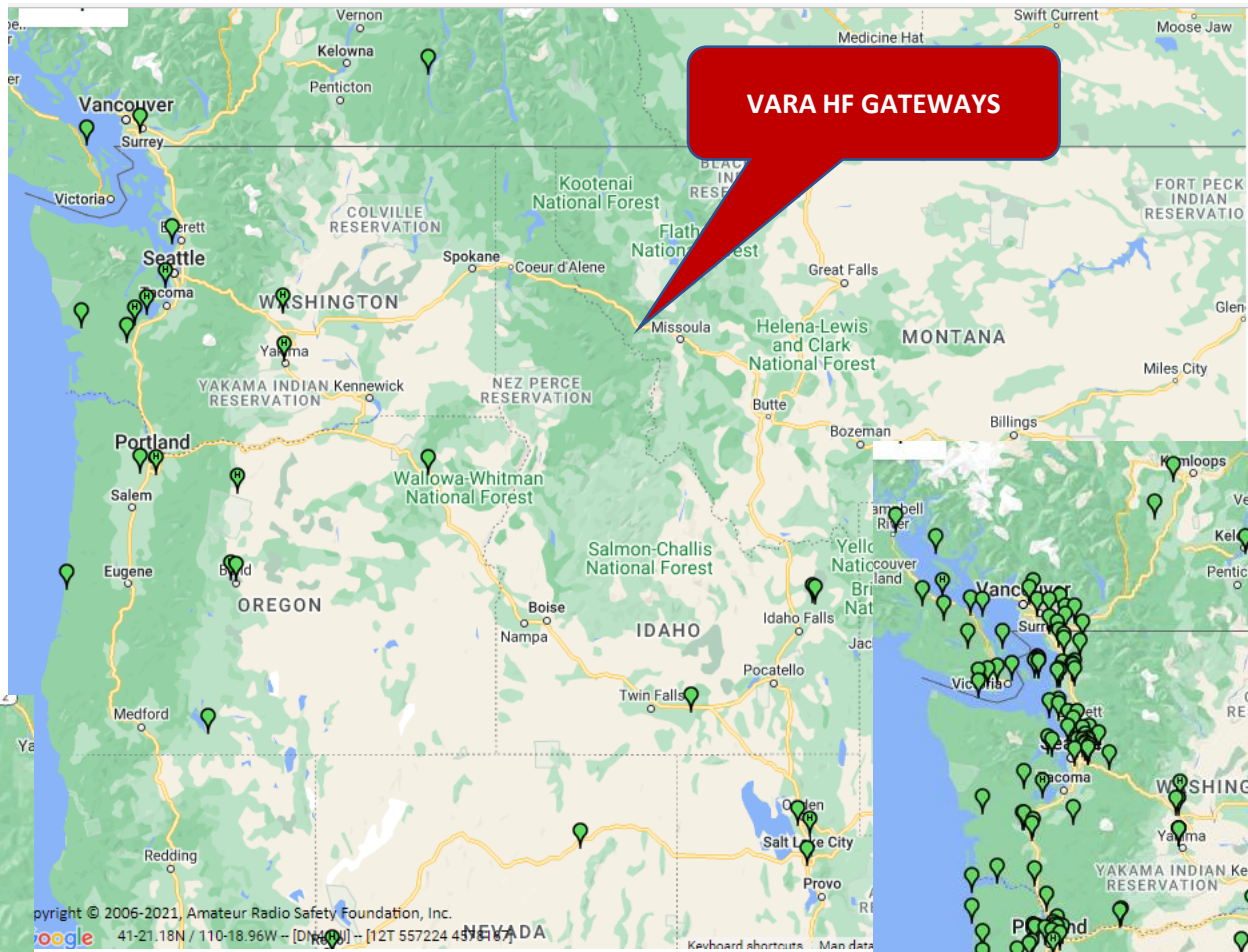
We will send it to your account password recovery address, or your [@winlink.org](#) address if you have not supplied one.

Callsign (Username) *

Send my password

[Complete Password Reset](#)

In the Winlink "Tools" menu you can get maps showing various types of Winlink gateways: VARA, ARDOP, PACTOR, Packet



NOTE: There a a lot more packet gateways than VARA gateways because packet has been around 40 years..

WINLINK EXPRESS IS COMMONLY USED;
AND THE GENERALLY PREFERRED SW.

Winlink Express 1.7.2.0 - K7BSV

System Folders: Inbox (0 unread), Read Items (0), Outbox (0), Sent Items (81), Saved Items (0), Deleted Items (4), Drafts (0)

Date/Time	Message ID	Size	Source	Sender	Recipient	Subject
2022/10/17 23:53	6ASZRTH76BDW	228	K7BNR	K7BNR	K7BSV	received
2022/10/17 23:51	L2BODMZ4SJV	462	K7BNR	K7BNR	K7BSV (P2P)	ACK: 213-Mason Impossible-Winlink Check-ins - 2022-10-17 16:25
2022/10/17 14:52	B3MPIC3P2UXA	192	KATERV	KATERV-10	K7BSV (P2P)	practice
2022/10/17 14:44	04RJDFC48BT6	208	KATERV	KATERV-10	K7BSV (P2P)	p2p practice
2022/10/17 13:19	P95FOOSDMU4H	228	W7WXX	W7WXX	K7BSV (P2P)	P2P message
2022/10/13 12:15	GP254WXI3FEF	2342	KC7VBT	KC7VBT	K7BSV	Z13-Winlink Wednesday-Oct 12 Winlink Net - 2022-10-12 23:41
2022/10/10 20:06	DRO8MSZL1P4H	468	K7BNR	K7BNR	K7BSV (P2P)	ACK: Winlink Check in Net - K7BSV - 8910 COLBURN CULVER RD, SPT ID, SELLE VALLEY
2022/10/07 14:34	HY9RDZSB5G0F	2256	N7SDC	N7SDC	AD7DD...	Idaho State ARES Digital Net
2022/10/06 22:44	ZW6CN9T18KWG	1956	WB7ML	WB7ML	K7BSV	Winlink Check in Net - WB7ML - HOME
2022/10/05 17:37	M6QQW34G22BZ	428	K7BNR	K7BNR	KF7VJ...	THANK YOU

WINLINK SETUP

Winlink Express Properties

Call Signs
 My Callsign: My Password:
 Callsign suffix (optional): (Used for country code)
 Password recovery e-mail:
 (Non-Winlink e-mail address where lost password will be sent when requested)

Auxiliary Callsigns and Tactical Addresses

My Grid Square:
 Winlink Express registration key:

Service Codes

 (Use PUBLIC for ham call signs. Separate multiple service codes by spaces.)
 If you change service codes, you must update the list of channels.

Contact Information (Optional)
 Name:
 Street address 1:
 Street address 2:
 City:
 State/Province:
 Country:
 Postal code:
 Web Site URL (optional):
 Phone number:
 Non-Winlink e-mail:
 Additional information (optional):

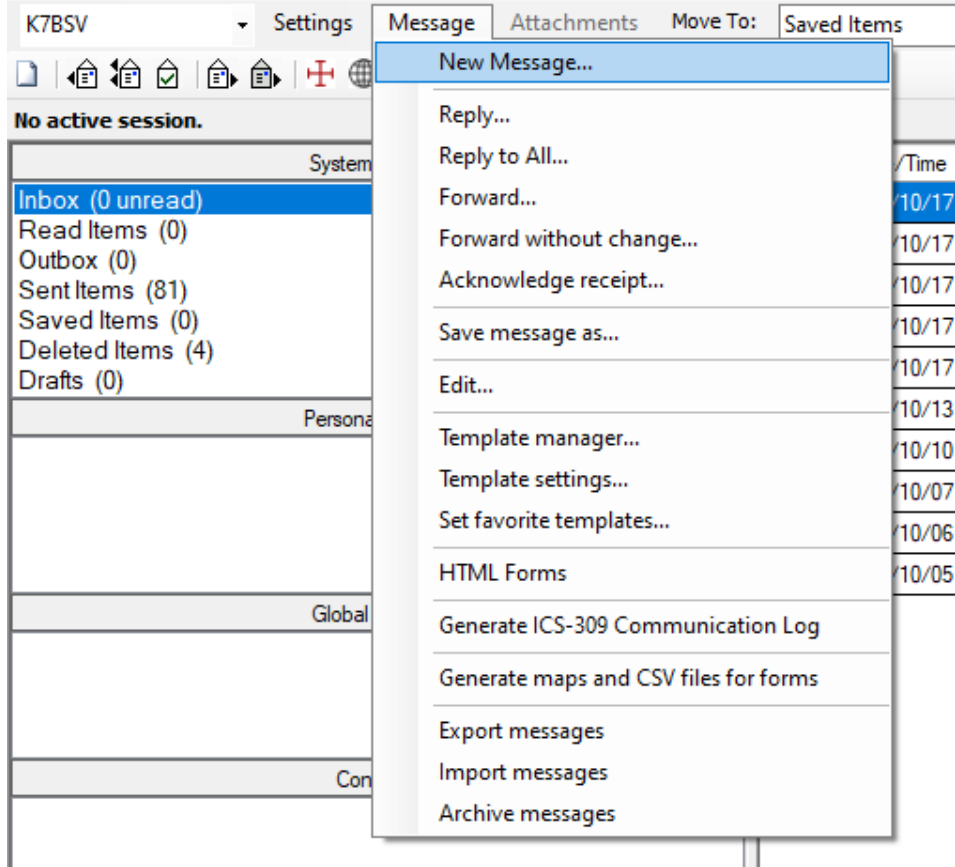
Recalculate HF path quality if SFI changes more than:
 Keep logs for weeks. Keep deleted messages for days.
 Display list of pending incoming messages prior to download
 Warn about connections to stations holding messages
 Allow diagnostic information to be sent to the Winlink Development Team
 Automatically install field-test (beta) versions of Winlink Express

OPTIONS FOR OPENING A "SESSION" IN WINLINK - A SESSION USES ONE OF THESE MODEM TYPES

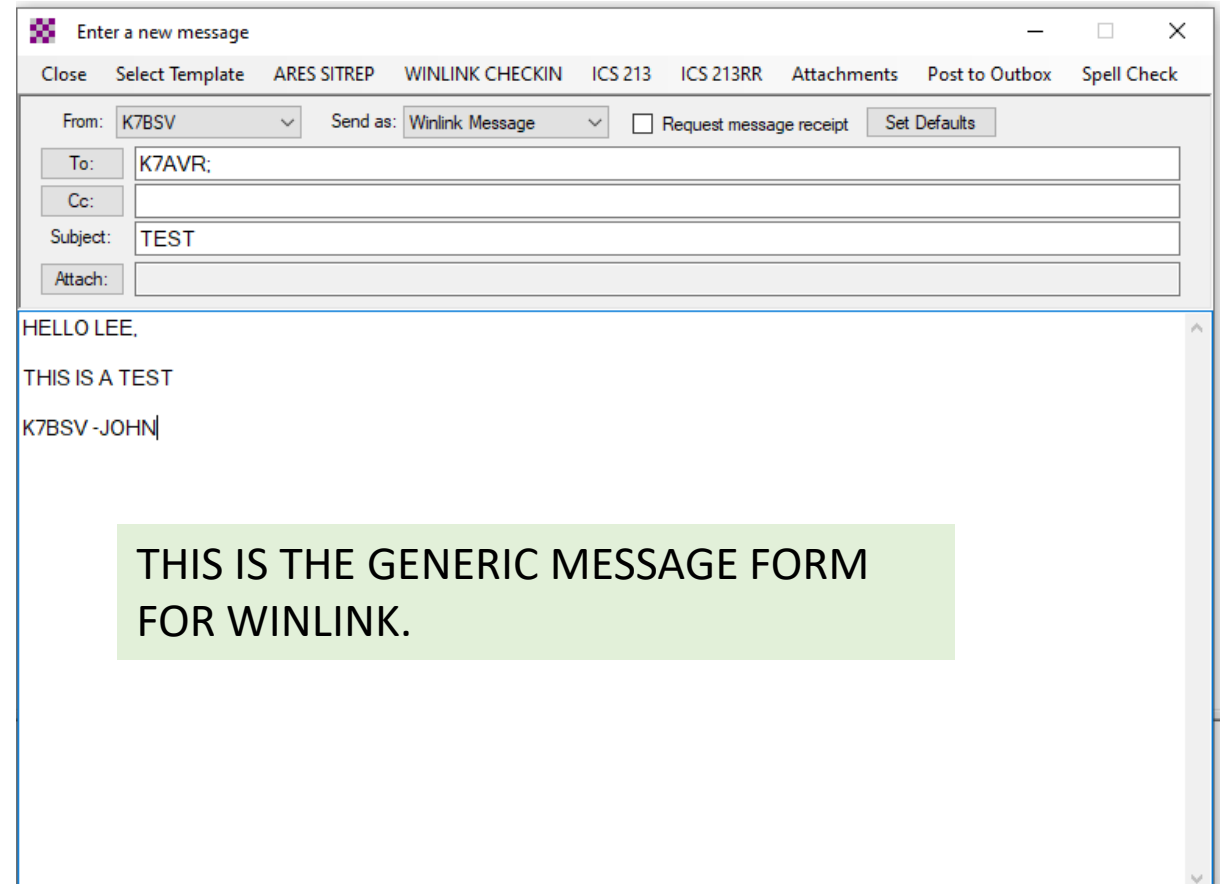
Winlink Express 1.7.2.0 - K7BSV

Open Session: **Telnet Winlink**

- Telnet Winlink
- Packet Winlink
- Pactor Winlink
- Robust Packet Winlink
- Ardop Winlink
- Vara HF Winlink
- Vara FM Winlink
- Iridium GO Winlink
-
- Packet P2P
- Pactor P2P
- Robust Packet P2P
- Ardop P2P
- Vara HF P2P
- Vara FM P2P
- Telnet P2P
-
- Pactor Radio-only
- Vara HF Radio-only
- Vara FM Radio-only



NEW MESSAGE SCREEN



Enter a new message

Close Select Template ARES SITREP WINLINK CHECKIN ICS 213 ICS 213RR Attachments Post to Outbox Spell Check

From: K7BSV Send as: Winlink Message Request message receipt Set Defaults

To: K7AVR;

Cc:

Subject: TEST

Attach:

HELLO LEE,
THIS IS A TEST
K7BSV -JOHN

Template Manager

Select Close Add Remove Edit

Standard Templates (version 1.0.216.0)

- ARC Forms
- CA STATE Forms
- CANADIAN Forms
- FEMA Forms
- FMRE Forms
- GENERAL Forms
 - Bulletin.txt
 - Field Situation Report.txt
 - GPS Position Report.txt
 - Incident Action Plan.txt
 - Incident After Action Report.txt
 - Incident Status Report.txt
 - Information.txt
 - Narrative Situation Report.txt
 - Quick Message.txt
 - Quick WEB EOC Resource Request.txt
 - Race Tracker.txt
 - Radio Net Log.txt
 - Welfare Message.txt
 - Windshield Damage Survey.txt
 - Windshield Damage Worksheet.txt
 - Winlink Check In.txt
 - Winlink Check Out.txt
- GENERAL MEDICAL Forms
- HI STATE forms
- HICS Forms
- IARU Forms
- ICS USA Forms
- MAPPING-GIS FORMS
- OR STATE Forms
- RADIOGRAM & RRI Forms
- SHARES Forms
- TX STATE Forms
- USGS
- WA STATE Forms
- WEATHER Forms
- Global Templates

THE NEW MESSAGE MENU OPTION TAKES YOU TO THESE OPTIONS. THE WINLINK CHECK-IN IS JUST ONE OPTIONAL FORM.

Winlink Check In

Bonner County ARES

Setup Click to add your agency/group name to title Load Check in Data Form Info

This is for an initial check in via Winlink Express. Also sent as plain text in message body for non-Express users.

Date/Time: 2022-10-18 10:11:52 Select Status: Exercise Net REAL EVENT Band: N/A VHF 220 Mode: Telnet Packet Ardop

Send To: K7BNR *Clear ALL "Send To" Entries.*
Entries will remain until you change or clear them

Calls Signs of Initial On-Site Operator(s): Enter ONLY CALLSIGNS!

Station Contact Name: Station contact Name Station Call sign: K7BSV

Location: Example: Hope Hospital, parking lot C near ER entrance

Latitude and longitude: LAT 48.349500 LOV MGRS -116.442833 11UNP4128055296 Grid DN18si

LAT/LON and MGRS default to the center of the grid square listed in Express Settings, unless a GPS is used or Lat/LON or MGRS must be entered manually. Without properly formatted GPS coordinates this form cannot be mapped in Winlink Express.

Comments Max Characters 220

ENTER YOUR CHECK IN MESSAGE AND HIT THE SUBMIT BUTTON BELOW

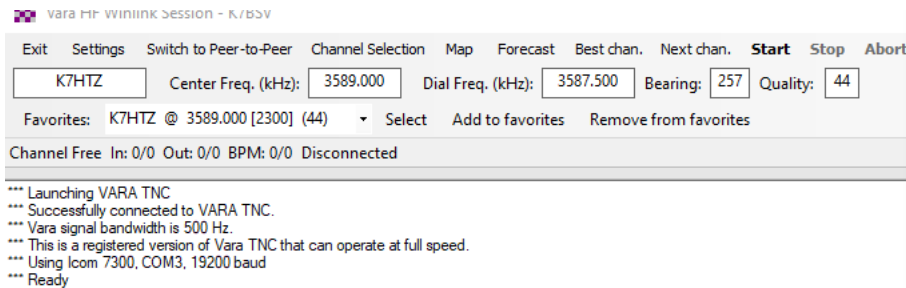
Save Check in Data Submit Reset Form

Ver 4.0.8.5

THE DATA IS TRANSMITTED ON THE GENERIC FORM. IT PRINTS OUT AT THE OTHER END IN THE CORRECT FORMAT.



WINLINK TELNET SCREEN



VARA HF CHANNEL SELECTION

VARA HF Channel Selector

Exit Select Update Via Internet Update Via Radio Map Forecast SFI All RMS

Callsign	Frequency (kHz)	Mode	Grid Square	Hours	Group	Distance (km)	Bearing (Degrees)	Path Reliability Estimate	Path Quality Estimate
K7UNI	7102.000	V2300	DN05WH	00-23	PUBLIC	361	201	79	55
K7RHT	7101.700	V2300	CN97RD	00-23	PUBLIC	333	248	78	55
VA7DEP	7088.500	V2300	CN89ND	00-23	PUBLIC	478	283	78	54
K7NHV	7103.700	V2300	CN87SK	00-23	PUBLIC	458	259	78	54
K7HTZ	7102.700	V2300	CN87OD	00-23	PUBLIC	491	257	78	53
W7PLC	7101.900	V2300	CN87MA	00-23	PUBLIC	508	256	77	52
N7LEW	7103.500	V2300	CN94HC	00-23	PUBLIC	605	220	77	48
KG7AV	7103.500	V2300	CN94IB	00-23	PUBLIC	604	220	77	48
VA7PF	7064.500	V2300	CN89CA	00-23	PUBLIC	543	281	77	52
KF7RFI	7101.800	V2300	CN95IC	00-23	PUBLIC	515	227	76	51
VE6HM	7064.500	V2300	DO33HM	00-23	PUBLIC	613	019	73	49
VA7EDG	3592.500	V2300	DN09WS	00-23	PUBLIC	199	323	73	50
KD7ZDO	7103.000	V2300	CN85QH	00-23	PUBLIC	578	237	72	48
K7RHT	3586.500	V2300	CN97RD	00-23	PUBLIC	333	248	72	50
N7TRY-2	7100.000	V2300	CN85NI	00-23	PUBLIC	590	238	71	48
AG7MM	7103.500	V2300	DN32CM	00-23	PUBLIC	680	161	69	45
N7YRC	3550.000	V500	CN96RO	00-23	PUBLIC	363	239	69	48
K7UNI	3595.000	V2300	DN05WH	00-23	PUBLIC	361	201	68	48
K7UNI	3584.000	V500	DN05WH	00-23	PUBLIC	361	201	68	48
KF7RSF	10146.500	V2300	CN73SC	00-23	PUBLIC	851	230	66	45
K7DAE	7106.000	V500	DN43CT	00-23	PUBLIC	619	143	65	45

VARA HF SCREEN

Winlink Express 1.7.2.0 - K7BSV

K7BSV Settings Message Attachments Move To: Saved Items Delete Open Session: Vara HF Winlink Logs Help

In Vara HF Winlink session.

System Folders	Date/Time	Message ID	Size	Source	Sender	Recipient	Subject
Inbox (2 unread)	2022/10/30 14:47	7DOE9181KLB6	278	K7BSV	K7BSV	K7AVR	TEST MESSAGE FOR BCARC NOVEM
Read Items (0)							
Outbox (1)							
Sent Items (87)							
Saved Items (0)							
Deleted Items (4)							
Drafts (0)							

Edit a draft message entered by K7BSV

Close Select Template Attachments Post to Outbox Spell Check Save in Drafts

From: K7BSV Send as: Winlink Message Request message receipt Set Defaults

To: K7AVR;

Cc: KE4EW;

Subject: TEST MESSAGE FOR BCARC NOVEMBER PROGRAM

Attach:

Lee.

Here is a test message to show how VARA looks when transmitting data.

John|
K7BSV

VARA HF v4.6.2 K7BSV

Settings View Log* Monitor Help

300
250
200
150
100
50
0

bps

300
250
200
150
100
50
0

VU CPU AFC S/N

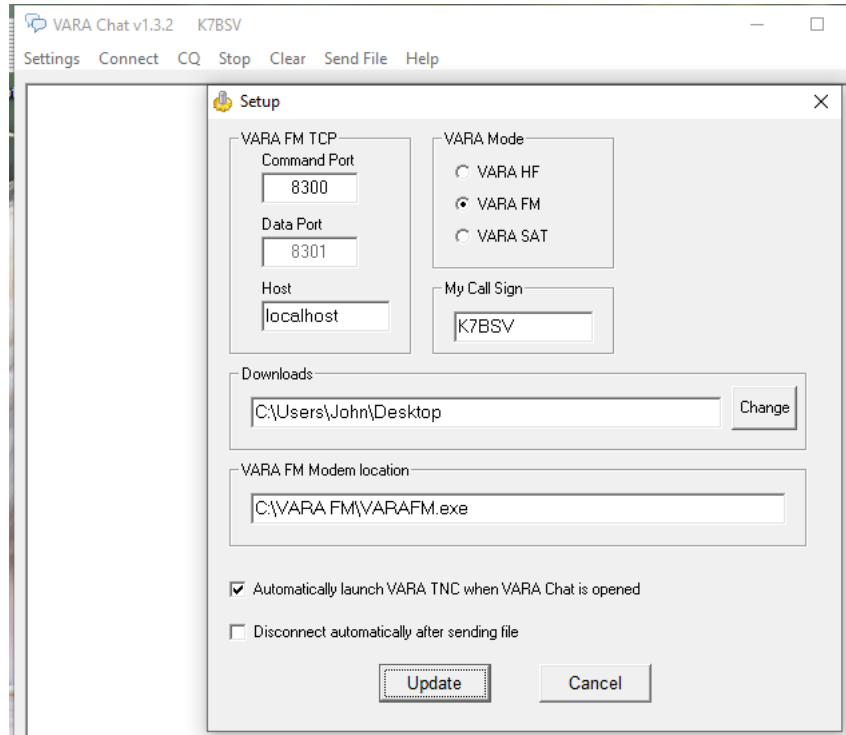
CPU Usage: 23 %

AFC: -3.7 Hz

S/N [2500 Hz]: +19.8 dB

DATA
ACK IDLE
NACK BREAK
REQ QRT

TX K7BSV CW ID (5) 270 bps 3 Bytes 2300 LISTEN TCP BUSY



VARA CHAT IS FAIRLY NEW. IT FEATURES KEYBOARD TO KEYBOARD CHAT.

YOU CONNECT PEER TO PEER. OTHERS USING VARA CHAT CAN MONITOR WHAT YOU KEYBOARD, LIKE FLDIGI.

WHEN YOU ARE CONNECTED YOU CAN ALSO SEND A FILE. ONLY THE RECIPIENT GETS THE BODY OF THE FILE IN CLEAR TEXT, OTHERS JUST GET GIBBERISH. THEY DO SEE THE TO, FROM AND SUBJECT OF THE MSG IN THE CLEAR.

YOU CAN USE HF, FM OR SAT.

LIKE VARA P2P, EXCEPT THE MESSAGE DOES NOT SHOW UP ON THE WINLINK WEB SITE.



YOU CAN CREATE A MESSAGE IN FLMSG, LIKE YOU WOULD USING FLDIGI, AND SEND IT VIA VARA CHAT

K7BNR ~ Bonner County ARES®
Situation Report (SITREP)
 Division: Northwest | Section: Idaho | District: 1 | County: Bonner (BNR)

This form does not replace the standard Radiogram

1. Date: (YYYYMMDD)	2. Time: (HHMM Local)	3. Report Type: (ROUTINE STATUS REPORT)	4. Precedence: (INFORMATIONAL)
5. TO: (Recipient)	6. Location: (Facility/County/Town)		
7. FROM: (Sender)	8. Location: (Facility/County/Town)	9. Contact: (Phone/Email/Frequency)	
10. Report Source: (Who reported?)	11. Report Source Contact: (Phone/Email/Frequency)		
12. Incident Location: (Address, Grid Locator, Lat/Long)	13. Photos Available: (NO)	14. Infrastructure: (NO DAMAGE)	
15. Remarks: (Detail - What has happened, What has been done, What will be done, Issues)			

End of Report

DIGITAL COMMUNICATIONS – LIVE DEMO

- WHEN THE SLIDE SHOW CLOSES I WILL SHOW MY COMPUTER SCREEN SO YOU CAN SEE FLDIGI.
- PLS ALSO LOOK ON WITH THE OTHERS WHO ARE ON THE “CALL”.



Business Items to Report

- Call for nominations
 - Elect club officers during January Annual Meeting
 - Open position 2023 – Secretary
 - Duties can be found in the Bylaws https://www.k7jep.org/wp-content/uploads/simple-file-list/BCARC_ByLaws02222017.pdf
- Field Day Report
 - Formal format – maximize number of QSO's and number of bonus points
 - 2A SSB & FT8
 - Consider satellite station
 - Consider GOTA station
 - Consider VHF bonus station (6m or 2m but not both)
 - Location TBD

Annual Business Meeting at January Meeting

- Items of business
 - Election of Officers for calendar year 2023
 - Required by Idaho State law for corporations
 - Discussion and vote on proposed dues increase and changes
 - \$25 individual annual dues
 - \$35 annual family dues
 - Removal of the option for free first year of membership for new hams appears to require a bylaws amendment



[This Photo](#) by Unknown Author is licensed under [CC BY-SA-NC](#)

CW Bingo!

Breakfast at Hydra
November 19, 2022
09:00 hrs.

In the spirit of the holiday's please invite your
significant others

Next Meeting
December 14, 2022
VFW Post, Sandpoint, ID
18:00 hrs. Informal Discussions and Eyeball QSO's
18:30 hrs. Meeting
Topic: *HF Propagation*
John Ailport, K7BSV